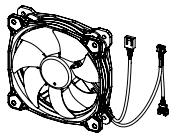
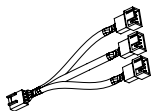


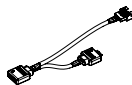
Parts List



A x 3
Fan



B x 1
PWM Cable



C x 1
Mainboard
Sync Cable



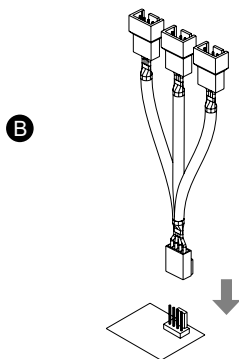
D x 12
Short Screw



E x 12
Long Screw

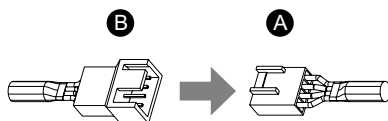
Installation Guide

1



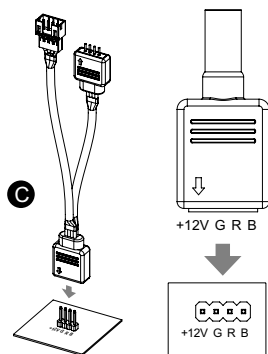
Connect the PWM cable to mainboard.

2



Connect the fan power cable to PWM cable.

3

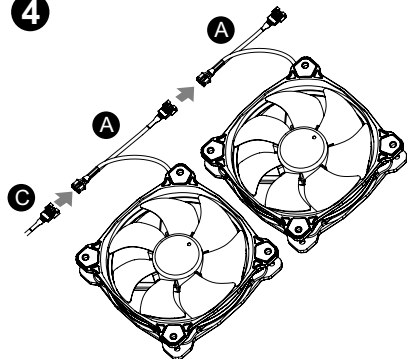


Connect the mainboard sync cable to mainboard.

⚠ CAUTION

Please power off the PC and check the Positive and Negative ends on the connector before connecting the cable to mainboard. Connecting the wrong end can damage the controller.

4



Connect the mainboard sync cable to fan led cable, and connect the fans in series.